



the benchmark
for **luxury** seating



Upholstery Fabrics

Troy

This abundantly shiny fabric is very smooth, very strong and feels wonderful; perfect for long lazy hours on the couch. Colours may slightly vary from one dyeing lot to another.

TECHNICAL INFORMATION

Composition :	100% PL
Weight g/m2 :	537
Width in cm / inch :	145 / 57
Number of Colors :	13
Martindale :	100 000.
Recommended Use :	Upholstery

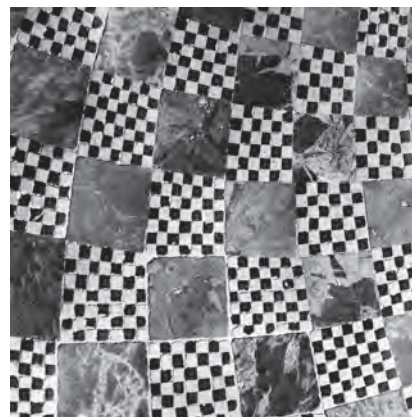
Profondo

An interesting combination of yarns creates this textural semi-plain. Flecks of linen provide an organic look, evocative of rock formations and a trend-based palette offers versatility for any contemporary interior.

TECHNICAL INFORMATION

Composition :	50% VI 26% LI 23% CO 1% PA
Weight g/m2 :	600
Width in cm / inch :	138 / 54,3
Number of Colors :	13
Martindale :	60 000.
Recommended Use :	Upholstery

Troy



Profondo

cineak.com

EUROPE / MIDDLE EAST / AFRICA

Antwerp, BELGIUM
+32 (0)3 354 03 66
Info-eu@cineak.com

AMERICAS / ASIA PAC

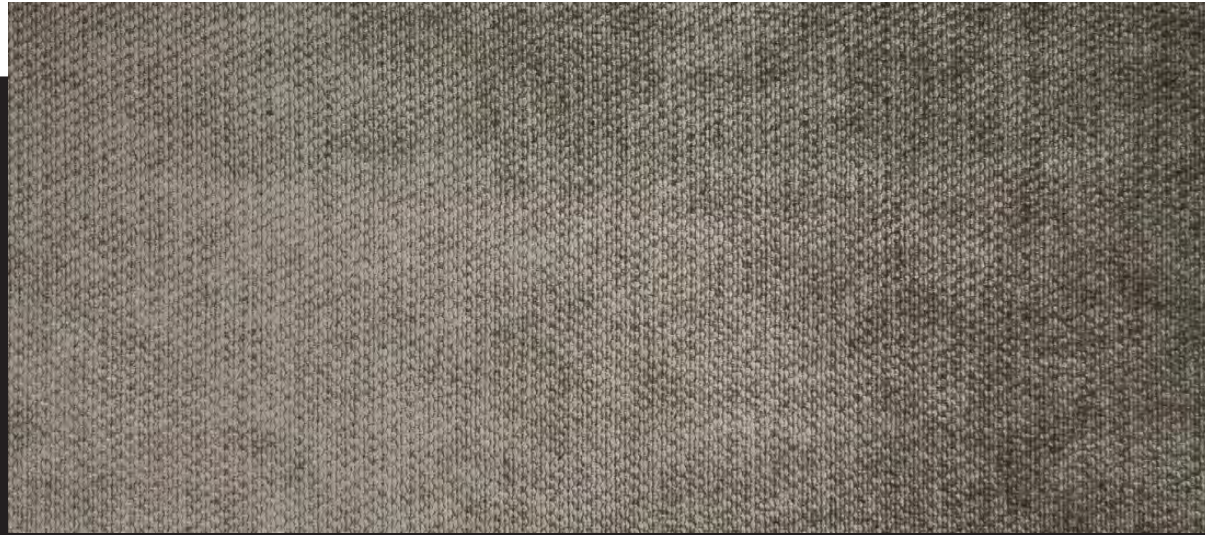
Hollywood, CA U.S.A.
+1 (866) 458 0529
info@cineak.com



the benchmark
for **luxury** seating

Troy

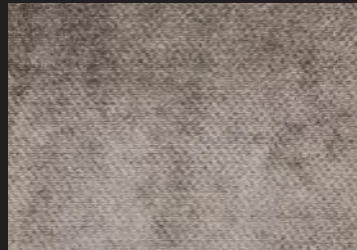
Profondo



TROY-17-shale



P 5216 - 21 - burnt orange



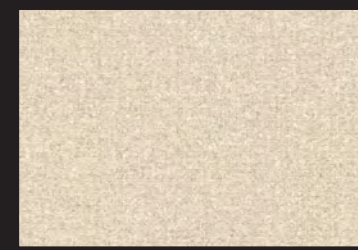
TROY-16-mink



TROY-04-sable



TROY-18-mahogany



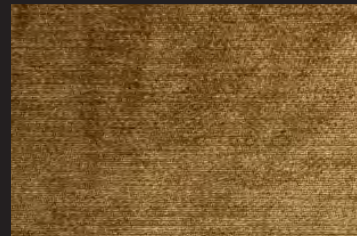
P 5216 - 01 - cream



P 5216 - 02 - linen



P 5216 - 04 - jute



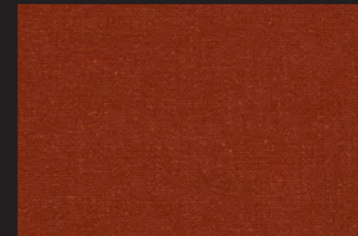
TROY-20-butterscotch



TROY-21-amber



TROY-22-ruby



P 5216 - 06 - chestnut



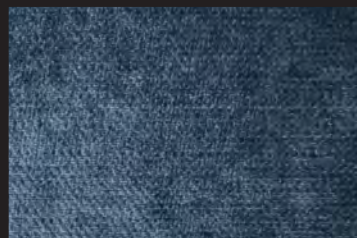
P 5216 - 07 - aqua grey



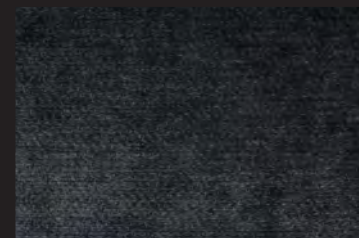
P 5216 - 08 - steel



TROY-23-vermillion



TROY-46-prussian



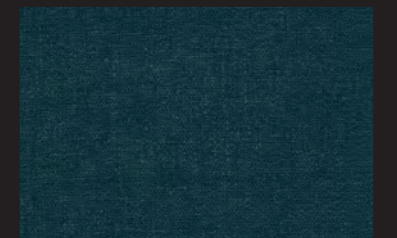
TROY-70-onyx



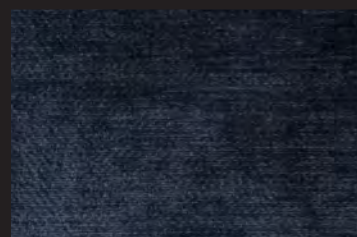
P 5216 - 09 - slate



P 5216 - 12 - marine



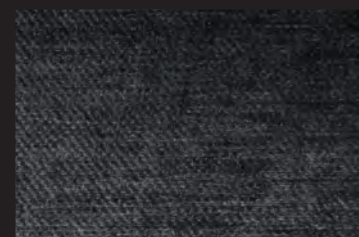
P 5216 - 13 - kingfisher



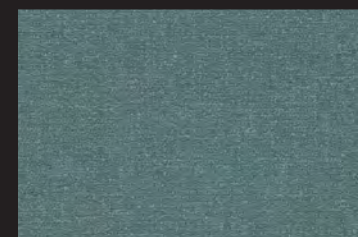
TROY-48-midnight



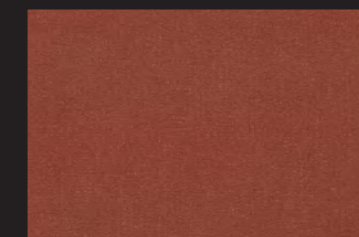
TROY-52-hunter



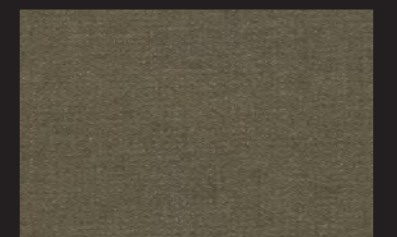
TROY-69-pewter



P 5216 - 14 - balsam



P 5216 - 18 - terracotta



P 5216 - 26 - carbon