

FLORIAN

DESIGNS

FLORIAN

DESIGNS

LINNATO

VI 34% CO 31% LI 15% PC13% PL 7%

Width cm 140

Weight Gr./M 945

Martindale 25.000 rubs
UNI EN ISO 12947-2

Pilling 3/4 on 5.000 rubs
ISO 12945-2

Lightfastness 5/6
UNI EN ISO 105-B02

Made in Italy

Firetests: Cal TB 117
BS 5852 Cigarette,
BS 5852 Match

CRIB5 - with treatment

TERZO

VW 32% PC 22% PL 22% VI 14% CO 18% LI 7%

Width cm 140

Weight Gr./M 810

Martindale 30.000 rubs
UNI EN ISO 12947-2

Pilling 4 on 5.000 rubs
ISO 12945-2

Lightfastness 5/6
UNI EN ISO 105-B02

Made in Italy

Firetests: Cal TB 117
BS 5852 Cigarette,
BS 5852 Match

CRIB5 - with treatment

LINNATO
TERZO

EUROPE | MIDDLE EAST | AFRICA

Antwerp, BELGIUM
+32 (0)3 352 26 36
info@floriandesigns.com

AMERICAS | ASIA PAC

Danville, CA 94526, U.S.A.
+1 (866) 204 9505
info@floriandesigns.com



F-LIN-03



F-LIN-15



F-LIN-05



F-LIN-02



F-LIN-04



F-LIN-31



F-LIN-06



F-LIN-16



F-LIN-46



F-LIN-151



F-LIN-150



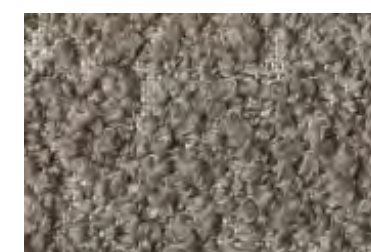
F-LIN-07



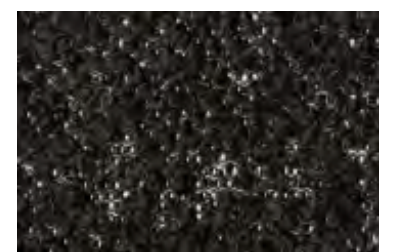
F-TER-01



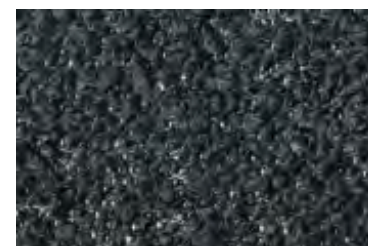
F-TER-02



F-TER-04



F-TER-07



F-TER-06



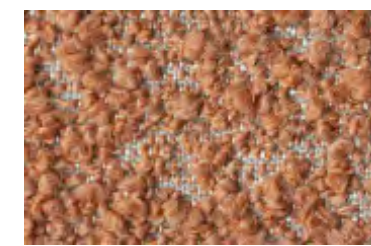
F-TER-05



F-TER-12



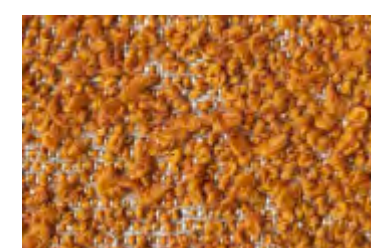
F-TER-13



F-TER-10



F-TER-09



F-TER-08