

FLORIAN

DESIGNS

LABELLA
LITANI

FLORIAN

DESIGNS

LABELLA

CO 42% PL 26% PC 32%

Width cm 140

Weight Gr./M 980

Martindale 45.000 rubs
UNI EN ISO 12947-2

Pilling 4 5.000 rubs
ISO 12945-2

Lightfastness 5/6
UNI EN ISO 105-B02

Made in Italy

Firetests: Cal TB 117
BS 5852 Cigarette,
BS 5852 Match

CRIB5 - with treatment

LITANI

VI 32% CO 31% PL 15% LI 14% PC 8%

Width cm 140

Weight Gr./M 1085

Martindale 30.000 rubs
UNI E ISO 12947-2

Pilling 3/4 on 5.000 rubs
ISO 12945-2

Lightfastness 5/6
UNI EN ISO 105-B02

Made in Italy

Firetests: Cal TB 117
BS 5852 Cigarette,
BS 5852 Match

CRIB5 - with treatment

EUROPE | MIDDLE EAST | AFRICA

Antwerp, BELGIUM
+32 (0)3 352 26 36
info@floriandesigns.com

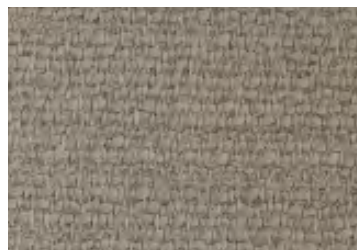
AMERICAS | ASIA PAC

Danville, CA 94526, U.S.A.
+1 (866) 204 9505
info@floriandesigns.com

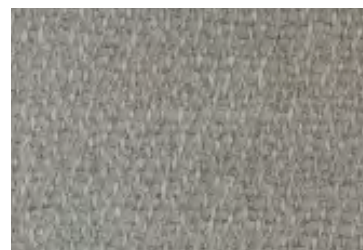
FLORIAN | LABELLA
DESIGNS



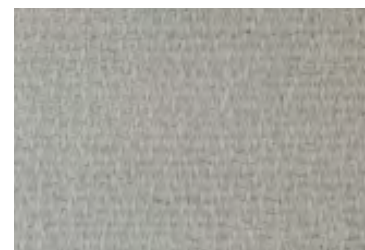
F-LAB-17



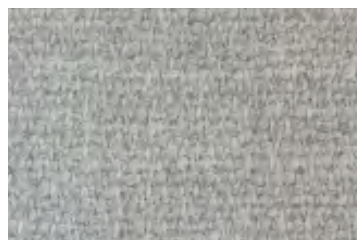
F-LAB-119



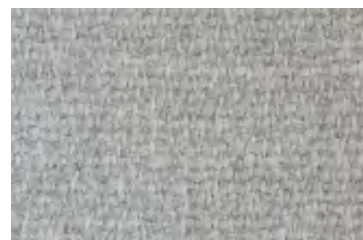
F-LAB-107



F-LAB-65



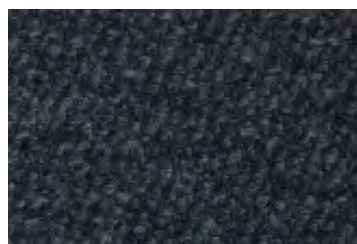
F-LAB-38



F-LAB-97



F-LAB-100



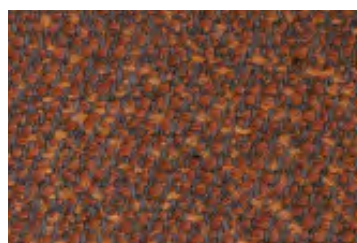
F-LAB-09



F-LAB-12



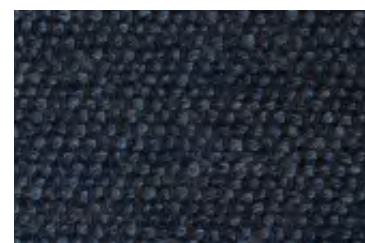
F-LAB-49



F-LAB-15

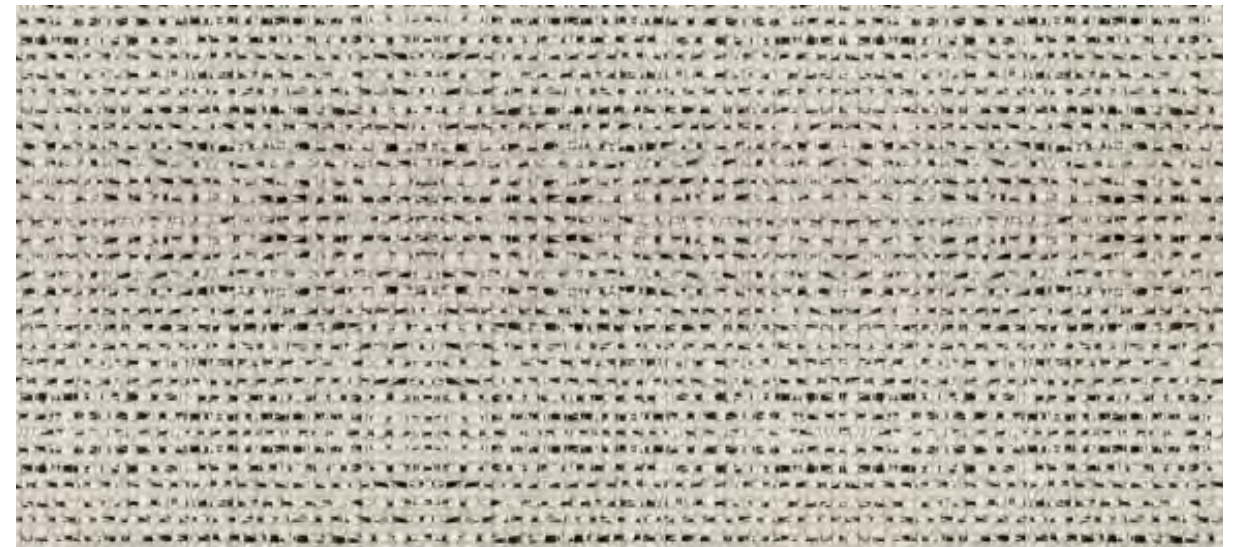


F-LAB-111



F-LAB-118

FLORIAN | LITANI
DESIGNS



F-LIT-02



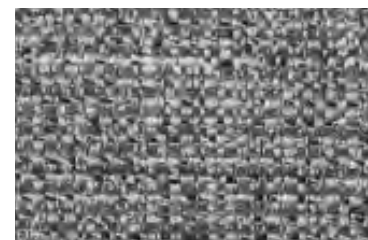
F-LIT-04



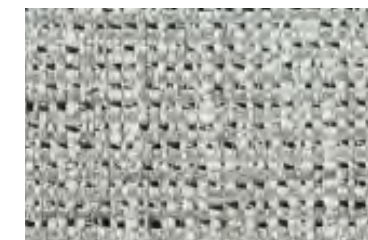
F-LIT-05



F-LIT-40



F-LIT-07



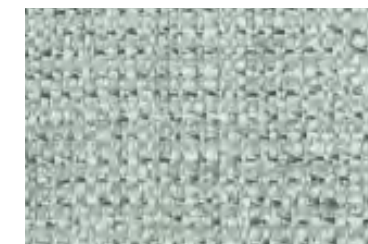
F-LIT-08



F-LIT-06



F-LIT-13



F-LIT-38



F-LIT-35



F-LIT-09



F-LIT-32



F-LIT-40