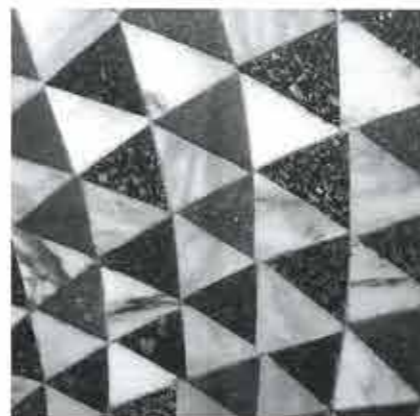




the benchmark
for **luxury** seating



Velvety - Nap



Upholstery Fabrics

Velvety

Very full-bodied faux uni with very dense weave. A soft chenille that imitates velvet with a worn-out look, the result of a play on yarns (chenille, fris ) and weaves. Flame retardant and suitable for both indoor and outdoor use.

TECHNICAL INFORMATION

Composition :	100%PL FLAME RETARDANT
Weight g/m2 :	780
Width in cm / inch :	140 / 55
Number of Colors :	13
Martindale :	50 000
Recommended Use :	Upholstery, severe use.
Fire ratings:	Flame retardant

Nap

A chenille fabric with a name that references rest that restores and recharges, just like soft chenille, smooth to the touch and reassuring, bringing a sensation of well-being and comfort.

TECHNICAL INFORMATION

Composition :	68%PL FLAME RETARDANT 32%PL FR
Weight g/m2 :	730
Width in cm / inch :	140 / 55
Number of Colors :	13
Martindale :	48 000
Recommended Use :	Upholstery, severe use.
Fire ratings:	Flame retardant

cineak.com

EUROPE / MIDDLE EAST / AFRICA

Antwerp, BELGIUM
+32 (0)3 354 03 66
Info-eu@cineak.com

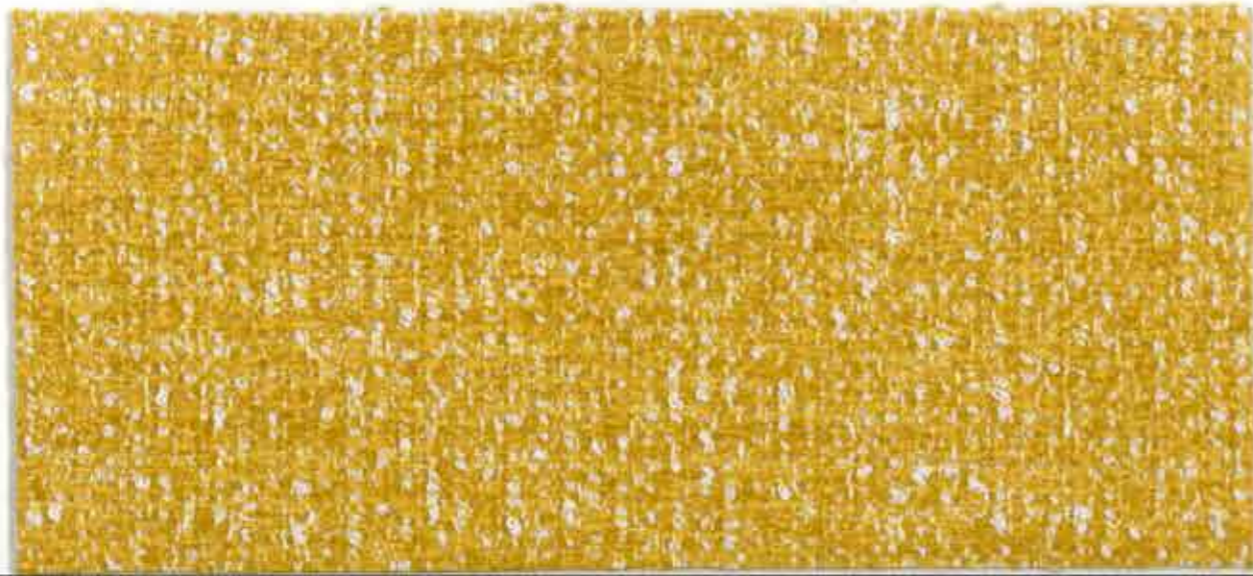
AMERICAS / ASIA PAC

Hollywood, CA U.S.A.
+1 (866) 458 0529
info@cineak.com



the benchmark
for **luxury** seating

Velvety



V 30362-08 - giallo



V 30362-02 - avorio



V 30362-04 - sabbia



V 30362-05 - french gray



V 30362-06 - grigio



V 30362-09 - acqua



V 30362-07 - argilla



V 30362-11 - pavone



V 30362-13 - ruggine



V 30362-14 - rosso



V 30362-15 - fuxia



V 30362-16 - blu



V 30362-10 - tiffany

Nap



Nap 30422-34 - ruggine



Nap 30422-33 - rubino



Nap 30422-31 - rosso



Nap 30422-30 - arancio



Nap 30422-25 - bluetto



Nap 30422-24 - blu



Nap 30422-19 - reseda



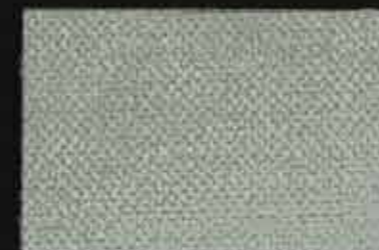
Nap 30422-09 - madreperla



Nap 30422-07 - marrone



Nap 30422-15 - olio



Nap 30422-10 - grigio



Nap 30422-11 - grafite



Nap 30422-12 - nero