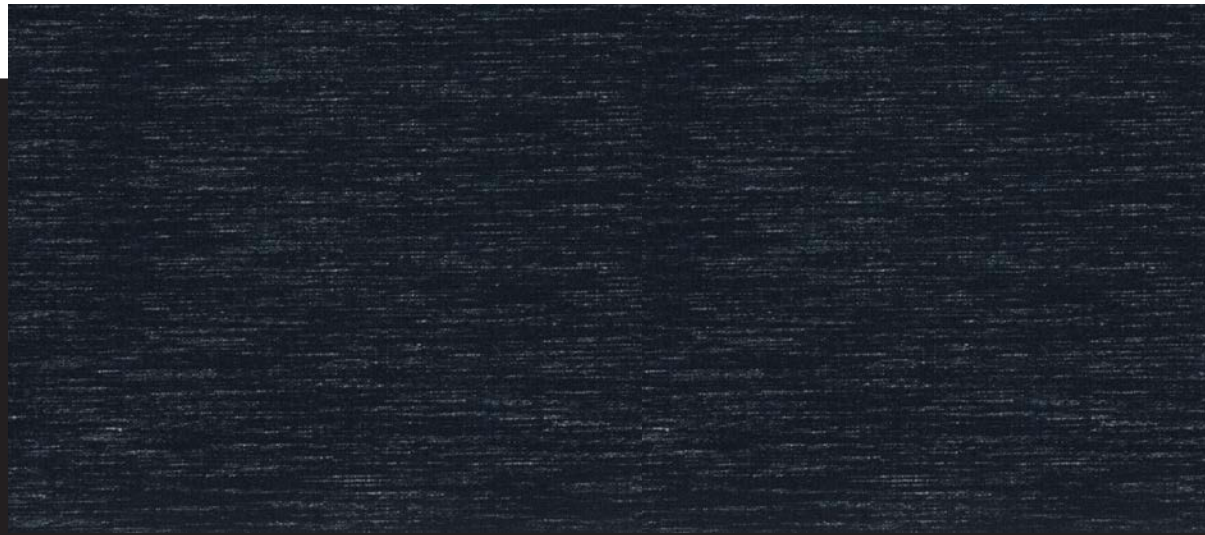




the benchmark
for **luxury** seating

Lavola

Profondo



L 5215 - 11 - marine



L 5215 - 01 - parchment



L 5215 - 02 - naturel



L 5215 - 03 - brazil



L 5215 - 04 - soft grey



L 5215 - 05 - carbon



L 5215 - 06 - dusk



L 5215 - 07 - slate



L 5215 - 10 - olive



L 5215 - 13 - coast



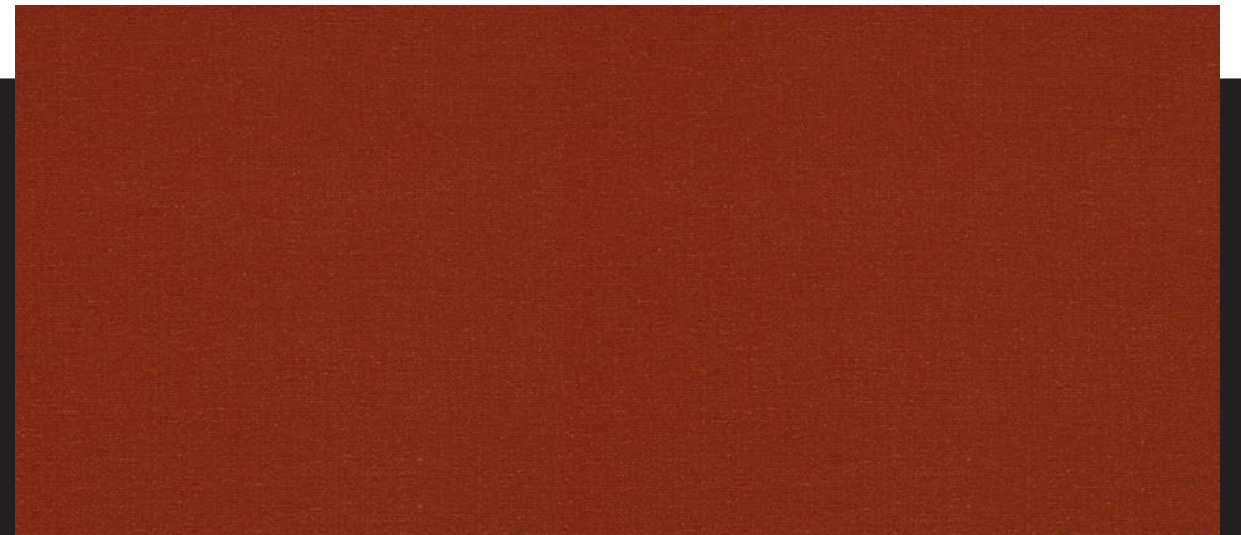
L 5215 - 14 - brick



L 5215 - 15 - rust



L 5215 - 18 - rose



P 5216 - 21 - burnt orange



P 5216 - 01 - cream



P 5216 - 02 - linen



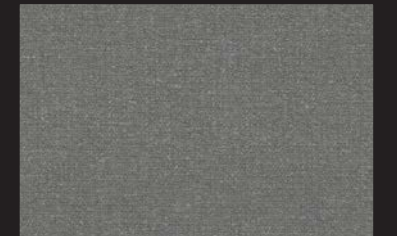
P 5216 - 04 - jute



P 5216 - 06 - chestnut



P 5216 - 07 - aqua grey



P 5216 - 08 - steel



P 5216 - 09 - slate



P 5216 - 12 - marine



P 5216 - 13 - kingfisher



P 5216 - 14 -balsam



P 5216 - 18 - terracotta



P 5216 - 26 - carbon



the benchmark
for **luxury** seating



Upholstery Fabrics

Lavola

An interesting combination of yarns creates this textural semi-plain. Flecks of linen provide an organic look, evocative of rock formations and a trend-based palette offers versatility for any contemporary interior.

TECHNICAL INFORMATION

Composition :	53% VI 17% LI 16% CO 9% PL 5% WO
Weight g/m2 :	600
Width in cm / inch :	138 / 54,3
Number of Colors :	13
Martindale :	70 000.
Recommended Use :	Upholstery

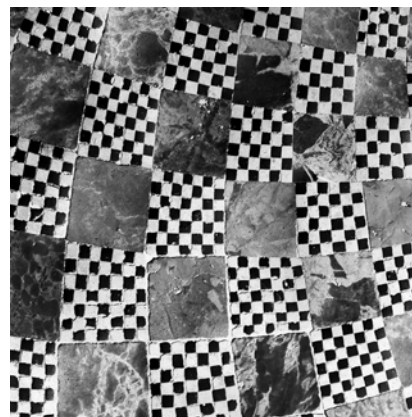
Profondo

An interesting combination of yarns creates this textural semi-plain. Flecks of linen provide an organic look, evocative of rock formations and a trend-based palette offers versatility for any contemporary interior.

TECHNICAL INFORMATION

Composition :	50% VI 26% LI 23% CO 1% PA
Weight g/m2 :	600
Width in cm / inch :	138 / 54,3
Number of Colors :	13
Martindale :	60 000.
Recommended Use :	Upholstery

Lavola



Profondo

cineak.com

EUROPE / MIDDLE EAST / AFRICA

Antwerp, BELGIUM
+32 (0)3 354 03 66
Info-eu@cineak.com

AMERICAS / ASIA PAC

Hollywood, CA U.S.A.
+1 (866) 458 0529
info@cineak.com